

Violoncelo

# Symphonia Cecília n.º 2

**Andante**

First staff of music, starting with a bass clef, a key signature of one sharp (F#), and a common time signature (C). It begins with a piano (*p*) dynamic marking. The melody consists of quarter and eighth notes, with some rests.

Second staff of music, starting at measure 4. It continues the melodic line with eighth notes and includes a trill-like figure.

Third staff of music, starting at measure 8. It features a steady eighth-note pattern.

Fourth staff of music, starting at measure 11. It continues the eighth-note pattern.

Fifth staff of music, starting at measure 14. It continues the eighth-note pattern.

Sixth staff of music, starting at measure 17. It continues the eighth-note pattern.

Seventh staff of music, starting at measure 20. It continues the eighth-note pattern.

Eighth staff of music, starting at measure 23. It features a more complex rhythmic pattern with some accidentals.

**Allegro**

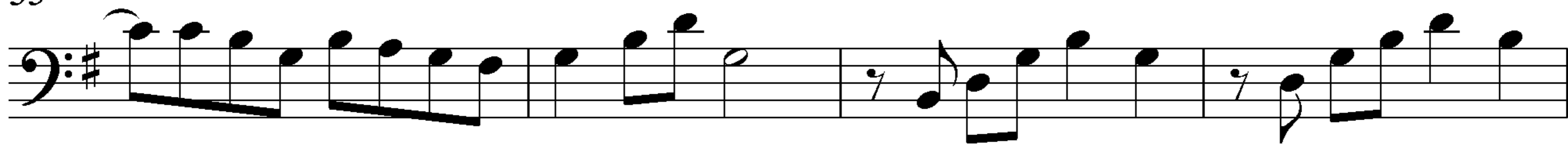
Ninth staff of music, starting at measure 27. It begins with a whole rest, followed by a change in tempo and a more active eighth-note melody.

Tenth staff of music, starting at measure 31. It continues the eighth-note melody with some grace notes and a final flourish.



## Violoncello

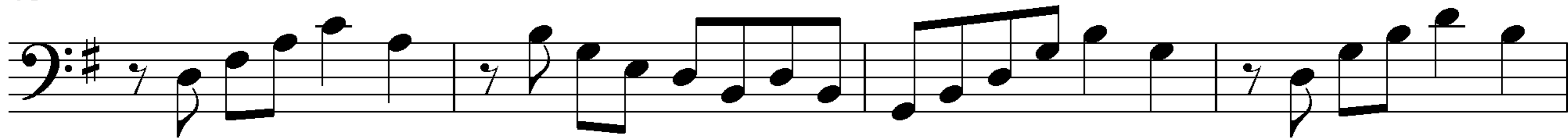
35



39



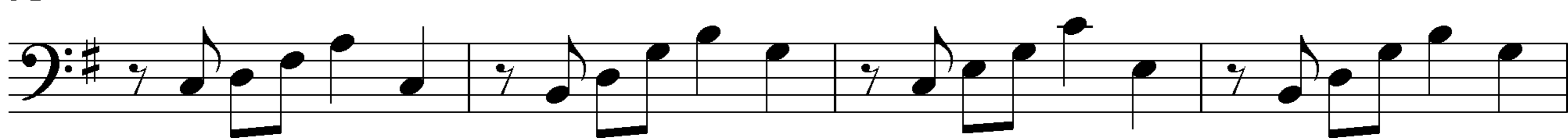
43



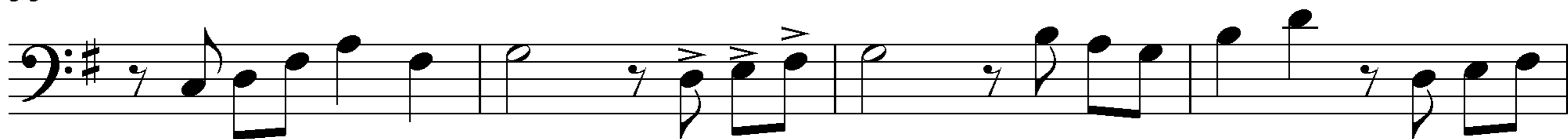
47



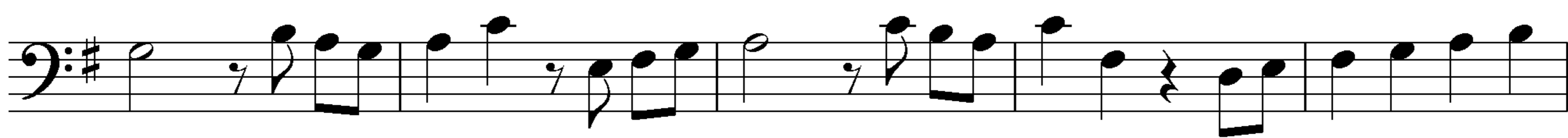
51



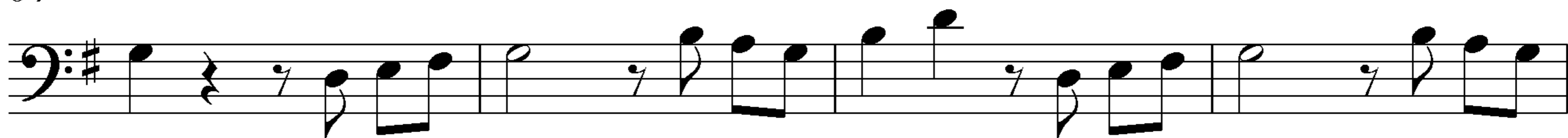
55



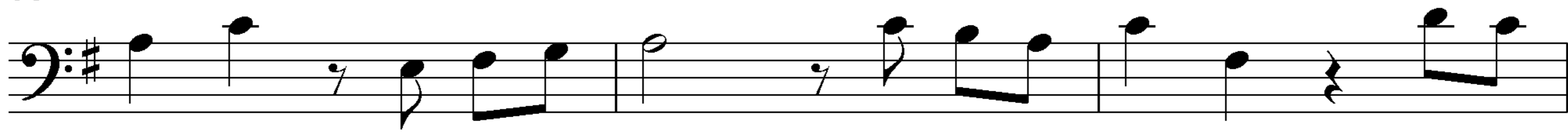
59



64



68



71

